

● Seven Steps to a Pain-Free Black Eye

Makeup can supply an easy special effect within anyone's grasp. We asked Dana Nye of the Ben Nye Makeup to walk us through the steps to making a quick black eye, and he went right to work on his model Peter Wilks. For bigger pics—and the additional steps to turn the black eye into a bruise, or add a little bit of gore—surf over to www.theatreface.com/blackeye. Not a member? Join up at www.theatreface.com/join.

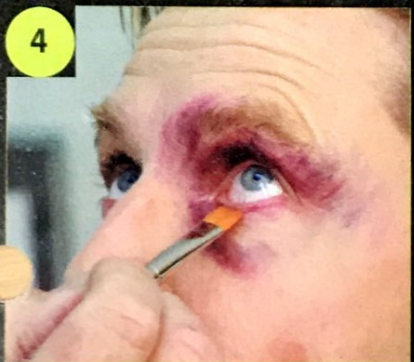
Supplies:

- Ben Nye Master Bruise Wheel (or individual colors: Dark Burgundy, Midnight Violet, Blood Red, Chrome Yellow or Goldenrod Creme Color, Coal Creme Color)
- Neutral Set Powder
- Flat Brushes (5, 7 or 10)
- Foam Sponge Sections
- Stipple Sponge Sections
- Velour Puff or Powder Brush

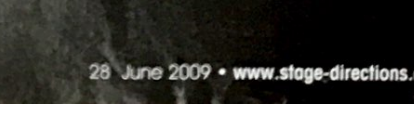
1 Apply foundation shade to match actor's skintone. Set with translucent powder.



From inner corner, apply Dark Burgundy shade with brush (No. 5) just above eyelid crease, extending outward toward temple. Apply Burgundy contour beneath eye following lower socket. Keep overall shape of injury irregular for realism.



Deepen Burgundy contour with Midnight Violet and Coal.



Apply Blood Red to lower lash line. Blend downward onto lower lid.



Blend contour colors lightly with a clean, dry brush (No. 10) to soften edges. Blend with a light motion to avoid overmixing colors (overmixing will create a "muddy" effect).



Apply Yellow or Goldenrod between lower lid and socket contour to simulate swelling.



Gently apply colorless powder with puff or brush to set, including upper and lower lids.



Remove excess powder with sponge dampened with water. This will "revive" color brightness. Intensify with more color if desired. 